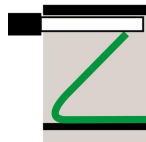
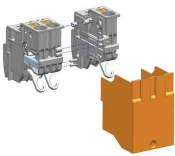
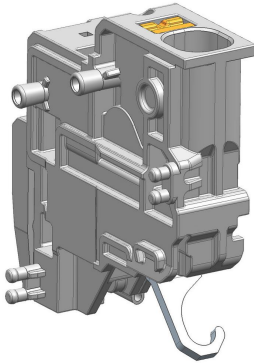


## PTKS 4/1 GR

27080.6



Transformerterminal for building odd pole numbers, Push-in connection, Mounting type: Custom profile, Rated cross-section: 4 mm<sup>2</sup>, Width: 8.1 mm, Colour: Grey

---

### Commercial

---

#### General

---

Colour: Grey

Country of origin: BG

Customs number: 85369010

GTIN (EAN): 4044211242800

Packaging unit: 50

Product description: Transformer terminal

Quantity unit: PC

Unit of weight: G

Weight per piece (including packaging): 5.488g

Weight per piece (not including packaging): 5.356g

---

## Technical

### Dimensions

Height: 35.4mm

Length: 32.5mm

Width: 8.1mm

### Ratings

Contamination degree: 3

Maximum power dissipation for nominal condition: 1.02W

Overvoltage category: III

Rated cross-section: 4mm<sup>2</sup>

Rated current: 32A

Rated impulse voltage: 8kV

Rated voltage: 800V

### Connection data

Connection position: Top

Connection principle: Push-in connection

Connections: 1

Stripping length: 12mm

Wire cross-section AWG, max.: 10

Wire cross-section AWG, min.: 20

Wire cross-section single core (rigid)/stranded, max.: 6mm<sup>2</sup>

Wire cross-section single-core (rigid) / stranded, min.: 0.5mm<sup>2</sup>

Wire cross-section stranded with wire-end ferrules, max.: 4mm<sup>2</sup>

Wire cross-section stranded with wire-end ferrules, min.: 0.5mm<sup>2</sup>

Wire cross-section stranded, max.: 4mm<sup>2</sup>

Wire cross-section stranded, min.: 0.5mm<sup>2</sup>

### Further technical data

Gauge plug acc. to EN 60 947-1: A4

Mounting type: Custom profile

Number of cross-connection channels: 1

### Materials

Flammability class UL 94: V-0

Insulation housing: Polyamide 6.6

Working temperature, max.: 120°C

Working temperature, min.: -40°C

---

## Approvals

---

### cUL Recognized

---

: E95701

cUL Recognized: 1

cUL Usegroup B: rated current: 30A

cUL Usegroup B: rated voltage: 600V

cUL Usegroup C: rated current: 30A

cUL Usegroup C: rated voltage: 600V

cUL approval: C22.2 No 158

cUL wire cross-section single-core (rigid) AWG, max.: 10

cUL wire cross-section single-core (rigid) AWG, min.: 20

cUL wire cross-section stranded AWG, max.: 10

cUL wire cross-section stranded AWG, min.: 20

cUL wire material: Cu

---

### KEMA KEUR approval

---

KEMA KEUR approval: EN 60947-7-1:2009

KEMA KEUR approval granted: ✓

KEMA rated current: 32A

KEMA rated impulse voltage: 8kV

KEMA rated voltage: 800V

KEMA stripping length: 12mm

KEMA wire cross-section single core (rigid), min.: 0.5mm<sup>2</sup>

KEMA wire cross-section single-core (rigid), max.: 6mm<sup>2</sup>

KEMA wire cross-section stranded with wire-end ferrules, max.: 4mm<sup>2</sup>

KEMA wire cross-section stranded with wire-end ferrules, min.: 0.5mm<sup>2</sup>

KEMA wire cross-section stranded, max.: 4mm<sup>2</sup>

KEMA wire cross-section stranded, min.: 0.5mm<sup>2</sup>

---

### UL Recognized

---

UL File Number: E95701

UL Recognized: 1

UL Usegroup B: rated current: 30A

UL Usegroup B: rated voltage: 600V

UL Usegroup C: rated current: 30A

---

UL Usegroup C: rated voltage: 600V

UL approval: UL 1059

UL factory wiring: ✓

UL field wiring: ✓

UL wire cross-section single-core (rigid) AWG, max.: 10

UL wire cross-section single-core (rigid) AWG, min.: 20

UL wire cross-section stranded AWG, max.: 10

UL wire cross-section stranded AWG, min.: 20

UL wire material: Cu

## Environment

### Environmental Product Compliance

REACH Candidate Substance Note: No

REACH Conform: Yes

REACH Reference date: 2025-01-21

RoHS Conform: Yes

## Accessories

### Quick marking



**PMC SB 7,5/40 So WH**

3327.7



**PC/HF-SB 7,5x4/60 WH**

33638.7

### Test plug

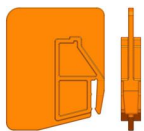


**PS 2,3**

2007.0

## Partition plate

---



**TW PTKS OG**

27093.3

---