

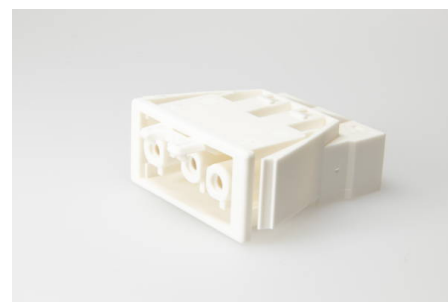


Building Installation Connector System AC 166®

G Panel Mounting

AC 166 GEBU/ 3 WS VSE

panel mount socket, 3 pole, white, coding: 1 (mains), wall thickness min.: 0.5 mm, wall thickness max.: 1.2 mm, voltage rating: 250 V, current rating: 20.0 A, cross-section rating: 2.5 mm², connection type: screwless



Order Info

reference number (ref. no.)	17807
PU	200
EAN	4028012111565

Type

type	panel mount socket
number of poles	3 pole
clamping units per pole	2
colour	white
coding	1 (mains)
cross-section rating	2.5 mm ²
connection type	screwless
PE function	yes
protection against incorrect plugging	yes
latch	yes

Technical Data

voltage rating	250 V
current rating	20.0 A
insulating material	PA 6.6
contact material	Spring Steel, Brass
core cross-section min.	0.5 mm ²
core cross-section max.	2.5 mm ²
impulse voltage rating	4.0 kV
flammability rating	V-2
max. Ambient Temperature Operation	70 °C
IP code	IP20
IP code when plugged	IP40
type of conductor solid	yes

stripping length	8.0-9.0 mm
wall thickness min.	0.5 mm
wall thickness max.	1.2 mm
upper limit temperature	100 °C
fixing	catch wing

Approvals

acc. to EN 61535	Download PDF
acc. to UL	Download PDF
acc. to CSA	Download PDF