

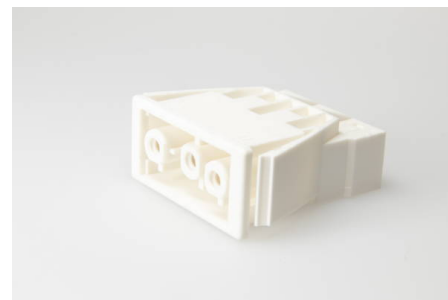


Building Installation Connector System AC 166®

G
Panel Mounting

AC 166 GEBU/ 3 white

panel mount socket, 3 pole, white, coding: 1 (mains), wall thickness min.: 0.5 mm, wall thickness max.: 1.2 mm, voltage rating: 250 V, current rating: 20 A, cross-section rating: 2.5 mm²



Order Info

| | |
|------------------------------------|---------------|
| reference number (ref. no.) | 168853 |
| PU | 200 |
| EAN | 4028012102907 |

Type

| | |
|--|---------------------|
| type | panel mount socket |
| number of poles | 3 pole |
| clamping units per pole | 2 |
| colour | white |
| coding | 1 (mains) |
| cross-section rating | 2.5 mm ² |
| PE function | yes |
| protection against incorrect plugging | yes |

Technical Data

| | |
|---|---------------------|
| voltage rating | 250 V |
| current rating | 20 A |
| insulating material | PA 6.6 |
| contact material | brass |
| core cross-section min. | 0.5 mm ² |
| core cross-section max. | 2.5 mm ² |
| impulse voltage rating | 4.0 kV |
| flammability rating | V-2 |
| max. Ambient Temperature Operation | 70 °C |
| IP code | IP20 |
| IP code when plugged | IP40 |
| type of conductor solid | yes |
| stripping length | 8.0-9.0 mm |
| wall thickness min. | 0.5 mm |
| wall thickness max. | 1.2 mm |

| | |
|--------------------------------|------------|
| upper limit temperature | 100 °C |
| fixing | catch wing |

Approvals

| | |
|-------------------------|------------------------------|
| acc. to EN 61535 | Download PDF |
| acc. to UL | Download PDF |
| acc. to CSA | Download PDF |

Accessories

| | |
|--------------------------|--------|
| AC 166 VSE white | 169453 |
| AC 166 GVKB/ 3 ws | 169253 |