

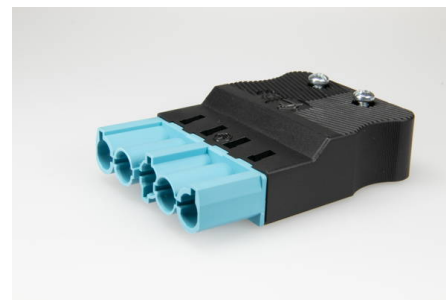


## Building Installation Connector System AC 166®

G

### Plug and Socket Connectors Flat Version

## AC 166 GSTF/515 pastel blue ZEL black



plug, 5 pole, pastel blue black, coding: 2 (DALI), cable diameter min.: 9.3 mm, cable diameter max.: 10.3 mm, voltage rating: 400 V, current rating: 20 A, cross-section rating: 2.5 mm<sup>2</sup>

### Order Info

<b>reference number (ref. no.)</b>	162465P
<b>PU</b>	100
<b>EAN</b>	4028012110964

### Type

<b>type</b>	plug
<b>number of poles</b>	5 pole
<b>clamping units per pole</b>	1
<b>colour</b>	pastel blue black
<b>coding</b>	2 (DALI)
<b>cross-section rating</b>	2.5 mm <sup>2</sup>
<b>PE function</b>	yes
<b>protection against incorrect plugging</b>	yes

### Technical Data

<b>voltage rating</b>	400 V
<b>current rating</b>	20 A
<b>insulating material</b>	PA 6.6
<b>contact material</b>	brass
<b>core cross-section min.</b>	0.5 mm <sup>2</sup>
<b>core cross-section max.</b>	4.0 mm <sup>2</sup>
<b>impulse voltage rating</b>	4.0 kV
<b>flammability rating</b>	V-2
<b>max. Ambient Temperature Operation</b>	70 °C
<b>IP code</b>	IP20
<b>IP code when plugged</b>	IP40
<b>type of conductor solid</b>	yes
<b>type of conductor flexible</b>	yes
<b>type of conductor stranded</b>	yes
<b>stripping length</b>	7.0 mm

<b>dismantling length PE</b>	39.0 mm
<b>dismantling length</b>	32.0 mm
<b>Assembly Contact Screw</b>	0.5x3.0 / $\cup$ 0.3 Nm
<b>strain relief assembly</b>	PZ 1 / $\cup$ 0.5 Nm
<b>cable diameter min.</b>	9.3 mm
<b>cable diameter max.</b>	10.3 mm
<b>strain relief</b>	yes
<b>upper limit temperature</b>	100 °C

## Approvals

<b>acc. to EN 61535</b>	<a href="#">Download PDF</a>
<b>acc. to UL</b>	<a href="#">Download PDF</a>
<b>acc. to CSA</b>	<a href="#">Download PDF</a>

## Accessories

<b>AC 166 VSF black</b>	169563
<b>AC 166 VSF white</b>	169553