

enclosures: **size "77.27"**

standard page: 198 ÷ 202
for 180 °C page: 208
aggressive environments page: 209
EMC page: 210

panel supports:

COB page: 258 ÷ 259

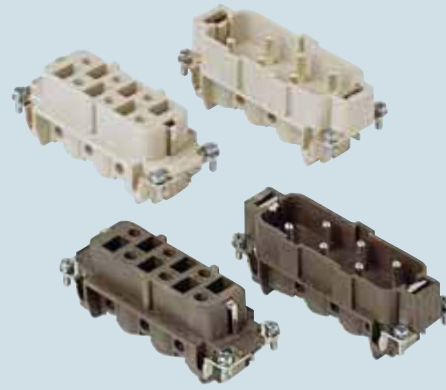
- features according to EN 61984:

35A 400/690V 6kV 3

- UL, CSA, CCC certified

- for maximum current load, see the insert load curve section on page 32

**inserts,
screw terminal connection**



description

part No.

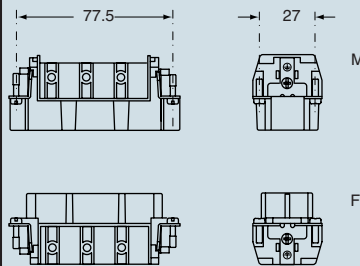
indirect, with plate
 female inserts with female contacts
 male inserts with male contacts

**CPF 06
 CPM 06**

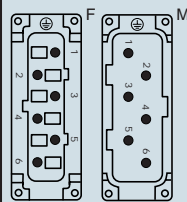
indirect, with plate, use in temperatures up to 180 °C
 female inserts with female contacts, brown
 male inserts with male contacts, brown

**CPF 06 RY
 CPM 06 RY**

dimensions in mm



contacts side (front view)



- inserts with plate, for section conductors:
1.50 ÷ 6 mm² - AWG 16 ÷ 10
- torsion couple recommended for conductor fastening screws and stripping length see section feature of inserts on page 13

dimensions indicated are not binding
 and may be changed without notice

enclosures: size "77.62"

standard page: 226 ÷ 229

aggressive environments page: 230

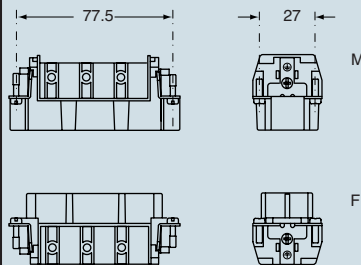
- features according to EN 61984:
- 35A 400/690V 6kV 3**
- UL, CSA, CCC certified
- for maximum current load, see the insert load curve section on page 32

**inserts,
screw terminal connection**

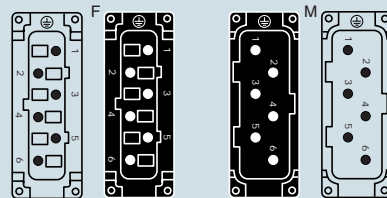


description	part No.	part No.
indirect, with plate female inserts No. (1÷6), white and black male inserts No. (1÷6), white and black	CPF 06 CPM 06	CPF 06 N CPM 06 N

dimensions in mm



contacts side (front view)



- inserts with plate, for section conductors:
1.50 ÷ 6 mm² - AWG 16 ÷ 10
- torsion couple recommended for conductor fastening
screws and stripping length see section feature of
inserts on page 13

dimensions indicated are not binding
and may be changed without notice

CP